

Hedefimiz **Daima** En İyisi
Our Aim is always the Best

Turkey
Discover
the potential



PMS **PEKSAN**
Makina & El Aletleri & İmalatı ve Döküm San.

PMX **PEMAX**
İthalat ihracat & Import Export



ÖNSÖZ

PEKSAN Makina Ltd. Şti. 1994 yılında Murat İPEK ve İSMAİL İPEK tarafından, Konya Karatay sanayide 150m² atölyede kuruldu. İmalat, satış ve yatırımlarını zaman içinde genişleten PEKSAN MAKİNA, bugün 16.000 m² alan üzerine kurulu 4.500 m² Kapalı fabrikasında, İndüksiyon Dökümhanesinden Cnc İşleme Atölyesine kadar komple entegre bir fabrika olmuştur.

PEMAX Makina Ltd. Şti.markası ile dünyaya açılan firmamız oluşturmuş olduğu bayilik alt yapısı ile aranan bir marka haline gelmiştir.

Temel ilkimiz; Pazarın ihtiyaç duyduğu ürünleri "Kaliteli üretim ve süreklilik arz ederek" müşterilerimize sunmaktır. Ürün yelpazemize her yıl yeni çeşitler ekleyerek, müşterilerimize daha geniş bir ürün portföyü sunarken, değişen ve gelişen dünyada yenilikçiliğimiz ile sektörün önde gelen firmaları arasındaki yerimizi korumaktayız.

Tecrübeli ve profesyonel ekibimizle, siz değerli müşterilerimize hizmet vermekteyiz.

PEKSAN Machine Ltd. Sti. Was founded in 1994 by Murat İPEK and İSMAİL İPEK in Konya Karatay industry. PEKSAN MACHINE, expanding its manufacturing, sales and investments over time, has been a complete integrated factory from the Induction Foundry to Cnc Machining Workshop in its 4.500 m² Indoor Factory which is established on 16.000 m² area.

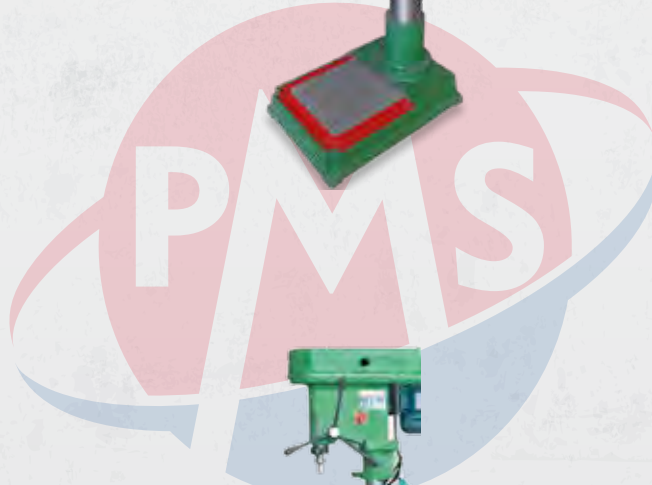
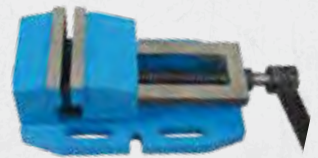
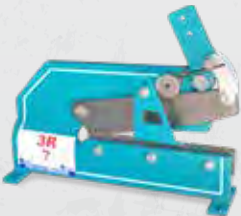
PEMAX Machine Ltd. Ltd. Şti.'s brand was opened to the world with the company has created a brand with the dealership has become our registered brand.

Our basic aim is providing to our customers the best products they need in the market with "A Quality production and good prices". By adding new varieties to our product range every year, while offering our customers a broader product portfolio, we maintain our place among the leading companies of the sector with our innovation in the changing and developing world.

With our experienced and professional team, we serve our valued customers.



ÜRÜN ÇEŞİTLERİMİZ PRODUCT MODELS



TEZGAH MENGENE ÇEŞİTLERİ

Steel Bench Clamp
Etau à Chaîne

مقعد المشبك الصلب



Kod / Code	Ebat / Dimensions	Ağırlık / Weight
Code / الرقم	Dimensions / أبعاد	Poids / الوزن
PMS 101	80 mm	6,5 kg
PMS 102	100 mm	7,5 kg
PMS 103	115 mm	8,5 kg
PMS 104	125 mm	9,5 kg
PMS 105	135 mm	13,5 kg
PMS 106	150 mm	15 kg
PMS 107	175 mm	18 kg
PMS 108	200 mm	18,5 kg

MATKAP MENGENE ÇEŞİTLERİ

Drill Wise
Percer Mangen

مقعد المشبك الصلب



Kod / Code	Ebat / Dimensions	Ağırlık / Weight
Code / الرقم	Dimensions / أبعاد	Poids / الوزن
PMS 121	80 mm	7 kg
PMS 122	100 mm	9 kg
PMS 123	125 mm	12,5 kg
PMS 124	150 mm	15 kg
PMS 125	175 mm	18 kg
PMS 126	200 mm	20 kg

BORU MENGENE ÇEŞİTLERİ



مقعد المشبك الصلب

Types of Pipe Menger
Types de Tuyaux Menger



Kod / Code	Ebat / Dimensions
Code / الرقم	Dimensions / أبعاد
Kancalı Boru Mengenesi	PMS 131 2"
	PMS 132 3"
Kancalı Boru Mengenesi Sehpası	PMS 133 2"
	PMS 134 3"

DEMİRCİ ÖRSÜ



سندان الحديد

Iron Anvil
Enclume De Fer

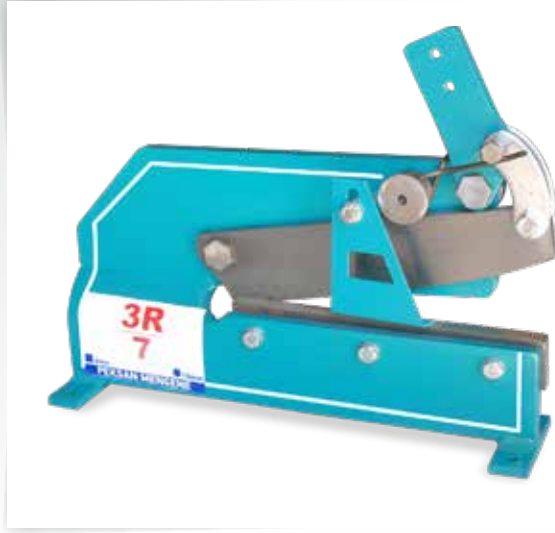


Kod / Code	Ağırlık / Weight
Code / الرقم	Poids / الوزن
PMS 151	20 kg
PMS 152	30 kg
PMS 153	45 kg
PMS 154	60 kg
PMS 155	90 kg

KOLLU SAÇ MAKASI

Sheet Metal Cutting Machine
Machine de Découpe de Tôle

آلة قص الحديد



Kod / Code	Ebat / Dimensions	Ağırlık / Weight
Code / الرقم	Dimensions / أبعاد	Poids / الوزن
PMS 111	3R3 mm	9 kg
PMS 112	3R4 mm	12 kg
PMS 113	3R5 mm	18 kg
PMS 114	3R7 mm	23 kg

BETON DEMİR MAKASI

Concrete Iron Shear
Cisaille de fer à béton

آلة قطع الحديد



Kod / Code	Ebat / Dimensions	Ağırlık / Weight
Code / الرقم	Dimensions / أبعاد	Poids / الوزن
PMS 161 - 22/50	22 mm	22 kg
PMS 162 - 26/50	26 mm	38 kg
PMS 163 - 28/50	28 mm	55 kg
PMS 164 - 32/50	32 mm	60 kg

32 MM GRAMERLİ SÜTUNLU MATKAP



آلة الثقب العمودي

32 mm Grammer Column Drill
Foret de colonne Grammer de 32 mm



Kod	Code	Code	الرقم	PMS 171	
Delme Kapst.	Drilling Capacity	Bouchon de Forage	فارق الثقب	32	mm
Punta Girişi	Mandren Conic	Mandren Conique	مخروط الثقب	MK-4	mors
Delme Derin.	Drilling Deep	Forage Profond.	عمق الثقب	150	mm
Kolon Çapı	Column Diameter	Diamètre de la Colonne	قطر العمود	132	mm
İş Tablası Ebat	Work Table Size	Taille de la table de travail	حجم جدول العمل	45 x 45	mm
Alt Tablası Ebat	Lower Table Size	Taille de la table inférieure	قياس الجدول السفلي	40 x 40	mm
Motor Devri	Engine Speed	Moteur Overdrive	محرك السقالة	1400	d/dak
Motor Gücü	Height Load.	Puissance du Moteur	قوة المحرك	0,75	kW
Genişlik	Width	Largeur	عرض	48	kW
Uzunluk	Length	Longueur	طول	109	kW
Yükseklik	Height	Hauteur	ارتفاع	190	kW
Ağırlık	Weight	Poids	الوزن	450	kg

20 ve 25 mm GRAMERLİ SÜTUNLU MATKAP



آلة الثقب العمودي

Grammer Column Drill
Perceuses a Colonnes



Kod	Code	Code	الرقم	PMS 173	PMS 172	
Delme Kapst.	Drilling Capacity	Bouchon de Forage	فارق الثقب	20	25	mm
Punta Girişi	Mandren Conic	Mandren Conique	مخروط الثقب	MK-3	MK-3	mors
Delme Derin.	Drilling Deep	Forage Profond.	عمق الثقب	100	133	mm
Kolon Çapı	Column Diameter	Diamètre de la Colonne	قطر العمود	88	113	mm
İş Tablası Ebat	Work Table Size	Taille de la table de travail	حجم جدول العمل	30 x 30	35 x 35	mm
Alt Tablası Ebat	Lower Table Size	Taille de la table inférieure	قياس الجدول السفلي	25 x 25	38 x 40	mm
Motor Devri	Engine Speed	Moteur Overdrive	محرك السقالة	1400	1400	d/dak
Motor Gücü	Height Load.	Puissance du Moteur	قوة المحرك	0,55	0,55	kW
Genişlik	Width	Largeur	عرض	36	41	kW
Uzunluk	Length	Longueur	طول	75	94	kW
Yükseklik	Height	Hauteur	ارتفاع	171	177	kW
Ağırlık	Weight	Poids	الوزن	100	215	kg

16 mm SÜTUNLU MATKAP

Columnar Drill
Perceuses a Colonnes

آلة الثقب العمودي



Kod	Code	Code	الرقم	PMS 174	
Delme Kapst.	Drilling Capacity	Bouchon de Forage	فارق الثقب	16	mm
Punta Girişİ	Mandren Conic	Mandren Conique	مخروط الثقب	MK-2	mors
Delme Derin.	Drilling Deep	Forage Profond.	عمق الثقب	100	mm
Kolon Çapı	Column Diameter	Diamètre de la Colonne	قطر العمود	75	mm
İş Tablası Ebat	Work Table Size	Taille de la table de travail	حجم جدول العمل	28 x 28	mm
Alt Tablası Ebat	Lower Table Size	Taille de la table inférieure	قيس الجدول السفلي	25 x 30	mm
Motor Devri	Engine Speed	Moteur Overdrive	محرك السقالة	1400	d/dak
Motor Gücü	Height Load.	Puissance du Moteur	قوة المحرك	0,55	kW
Genişlik	Width	Largeur	عرض	34	kW
Uzunluk	Length	Longueur	طول	70	kW
Yükseklik	Height	Hauteur	ارتفاع	168	kW
Ağırlık	Weight	Poids	الوزن	85	kg

SABİT PLANYA MENGENESİ

Fixed Plans Vise Machine
Machine à Visser

آلة ملزمة المشبك ثابتة



Kod / Code	Ebat / Dimensions
Code / الرقم	Dimensions / أبعاد
PMS 201	100 mm
PMS 202	125 mm
PMS 203	150 mm
PMS 204	175 mm
PMS 205	200 mm

DÖNERLİ BASARLI FREZE MENGENESİ



آلة الثقب الدائرية

Rotary and Down-Push Milling Vise
Étau de Fraisage Rotatif et à Pression Descendante



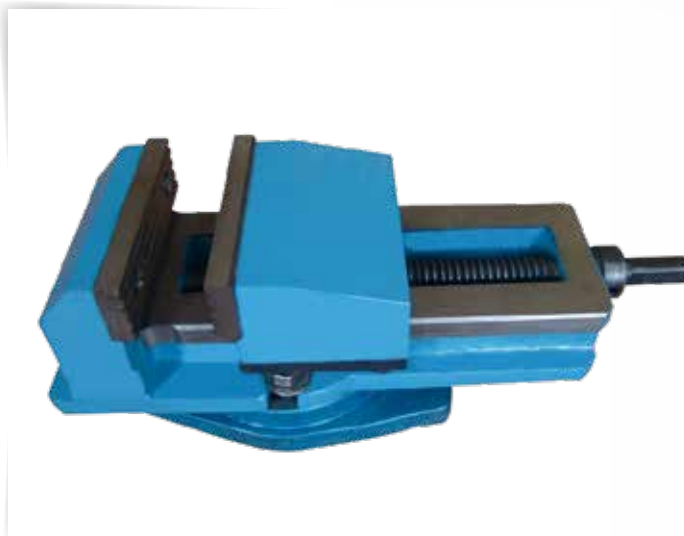
Kod / Code	Ebat / Dimensions
Code / الرقم	Dimensions / أبعاد
PMS 142	140 mm
PMS 143	160 mm
PMS 144	180 mm
PMS 145	200 mm
PMS 146	225 mm
PMS 147	250 mm

DÖNERLİ HASSAS FREZE MENGENESİ



آلة الثقب عمودية

Rotating Machine Vice Types
Types D'étau De Machine Tournante



Kod / Code	Ebat / Dimensions
Code / الرقم	Dimensions / أبعاد
PMS 221	140 mm
PMS 222	160 mm
PMS 223	180 mm
PMS 224	200 mm
PMS 225	225 mm
PMS 226	250 mm

HAREKETLİ DÖNER TABLO SPORT

Cutting Machine
Table Mouvante de Decoupage

آلة الطاولة المتحركة



Model	Tabla Ölçüleri	İş Tablası Yüksekliği	X / Y Hareketi	T Kanal Sayısı	1 Tambur Turu	Ağırlık
Models	Table Dimensions	Work Table Height	X / Y Movement	T Channel Number	A Drum Tour	Weight
Modèle	Dimensions de la table	Hauteur de la table de travail	Mouvement X / Y	Numéro de canal T	Un tour de tambour	poids
نموذج	أبعاد الجدول	ارتفاع طاولة العمل	الحركة X / Y	تي رقم القناة	جولة الطبل	الوزن
	mm	mm	mm	Pcs	mm	kg
PMS 231 / S1	360 x 210	180	210 x 160	2	4	48
PMS 232 / S2	435 x 245	200	260 x 170	3	4	63
PMS 233 / S3	520 x 275	220	335 x 265	3	4	103
PMS 234 / S4	610 x 275	220	425 x 265	3	4	109
PMS 235 / S5	705 x 280	215	435 x 275	3	4	124

MİCRO SPORT ÇEŞİTLERİ

Types de Micro Sport
Machine à Découper

آلة القطع البروفيل



Kod	Tabla Ölçüleri	İş Tablası Yüksekliği	X / Y Hareketi	T Kanal Sayısı	1 Tambur Turu	Ağırlık
Code	Table Dimensions	Work Table Height	X / Y Movement	T Channel Number	A Drum Tour	Weight
Code	Dimensions de la table	Hauteur de la table de travail	Mouvement X / Y	Numéro de Canal T	Un tour de tambour	Poids
قانون	أبعاد الجدول	ارتفاع طاولة العمل	الحركة X / Y	تي رقم القناة	جولة الطبل	الوزن
	mm	mm	mm	pcs	mm	kg

Döner Tabla	Rotary Table	Table Rotative	طاولة دوارة	PMS 241	230 x 145	155	160 x 120	3	2,5	25
Sabit Tabla	Fixed Table	Table Fixe	جدول ثابت	PMS 242	230 x 145	125	160 x 105	3	2,5	21
Döner Tabla	Rotary Table	Table Rotative	طاولة دوارة	PMS 243	320 x 145	155	260 x 120	3	2,5	29
Sabit Tabla	Fixed Table	Table Fixe	جدول ثابت	PMS 244	320 x 145	125	260 x 105	3	2,5	25
Tek Yön	One Direction	À sens unique	طريق واحد	PMS 245	320 x 145	125	260 x 105	3	2,5	25
Tek Yön	One Direction	À sens unique	طريق واحد	PMS 246	190 x 125	125	160 x 105	3	2,5	20



Code	□	U	○	●	■	L	—
	mm	mm	mm	mm	mm	mm	mm
PMS 181	65 x 165	160	100	40	40 x 40	100 x 100	150 x 15
PMS 182	-	120	-	30	30 x 30	60 x 60	80 x 10
PMS 183	-	80	-	20	20 x 20	40 x 40	40 x 10
PMS 184	-	60	-	20	20 x 20	40 x 40	40 x 10

Kod	Motor Gücü	Motor Devri	Testere	Taşlama	Genişlik	Uzunluk	Yükseklik	Ağırlık
Code	Motor power	Engine Speed	Saw	stoning	Width	Length	Height	Weight
Code	Puissance du Moteur	Vitesse du Moteur	Scie	Lapidation	Largeur	Longueur	Hauteur	Poids
قانون	قوة المحرك	سرعة المحرك	متشار	رجم بالحجارة	عرض	طول	ارتفاع	الوزن
	HP	RPM	mm	mm	mm	mm	mm	kg
PMS 181	10 HP	2880	520x4x40	200x25x25	900	1.000	1.230	230
PMS 182	5,5 HP	2880	450x3x40	175x20x20	650	780	1.200	150
PMS 183	4 HP	2880	400x3x40	175x20x20	550	680	1.160	100
PMS 184	3 HP	2880	350x2,5x32	-	460	540	640	51

İŞKENCE ÇEŞİTLERİ



Kod / Code	Ebat / Dimensions
Code / الرقم	Dimensions / أبعاد
PMS 190	20 x 145 mm
PMS 191	30 x 145 mm
PMS 192	40 x 145 mm
PMS 193	50 x 145 mm
PMS 194	60 x 145 mm
PMS 195	70 x 145 mm
PMS 196	80 x 145 mm
PMS 197	90 x 145 mm
PMS 198	100 x 145 mm
PMS 199	125 x 145 mm
PMS 200	150 x 145 mm

Hedefimiz **Daima** En İyisi
Our Aim is always the Best

TURKEY

Discover
the potential



www.peksanmakina.com

info@peksanmakina.com



Fethiye Mahallesi İstiklal Organize Sanayi Bölgesi
77764 Sokak No: 3 Cumra - KONYA / TÜRKİYE

+90 (332) 342 54 40

+90 (533) 486 73 40